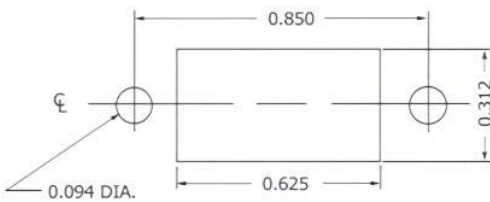


CONTACT DATA	CHASSIS MOUNTING DATA			
	CHASSIS THICKNESS	X-DIMENSION	BELOW CHASSIS	ABOVE CHASSIS
SOLDER CUP	1/16	.17	HRFA - 1	HRFA - 2
	3/32	.14		
	1/8	.12		
EYELET	1/16	.17	HRFA - 5	HRFA - 6
	3/32	.14		
	1/8	.12		
STRAIGHT	5/32	1/16		HRFA - 4
	3/32			
	1/8			
WIRE WRAP 0.045 SQ.	1/16	.17	HRFA - 23	
	3/32	.14		
	1/8	.12		
WIRE WRAP 0.025 SQ.	1/16	.17	HRFA - 13	
	3/32	.14		
	1/8	.12		



RECOMMENDED CHASSIS CUT-OUT

ELECTRICAL:

Wire Size

Solder Cup Type. One #20 AWG
 Eyelet Type. Two #20 AWG or
 Three #22 AWG

Current Rating. 3 Amperes

Withstanding Voltage:

Contact to Contact Sea Level. . . 1200 VRMS Minimum
 Contact to Ground Sea Level. . . 3300 VRMS Minimum
 Contact to Contact 70,000 Ft. . . 500 VRMS Minimum
 Contact to Ground 70,000Ft. . . 675 VRMS Minimum

MECHANICAL:

Creepage Between Contacts. 0.10 Minimum
 Air Space Between Contacts. 0.06 Minimum

+0.003

Contacts to Accept 0.020 - 0.001 DIA. Pins

Contacts:

Spring Temper Grade "A" Phosphor Bronze or
 Heat Treated Beryllium Copper
 Gold Plated over Copper or Nickel Plate

Mounting Hardware:

Special Studs, Screws, Lockwashers, and Nuts

Insulation Material

Choice of "MIL Approved" Thermosetting
 Insulations (See Page 45)

Temperature Ratings: -65°C to +125°C

Weight of Socket with Mountings: 0.25 oz.